

# CASE DEVELOPMENT THROUGH PHYSICAL SURVEILLANCE & CELL RECORD ANALYSIS



*Hosted by NW HIDTA*

September 8-11 2026

Kent PD TRAINING CENTER



## COURSE:

In today's rapidly evolving landscape of technology, cell phones, social media and more, effective case development in criminal investigations requires a multifaceted approach. This training course offers a unique blend of physical surveillance techniques and historic cell record analysis, equipping participants with the skills to gather, analyze, and interpret data from both the physical environment and cell record footprints. Students will learn that when the two are combined, it is a powerful tool not only for locating violent fugitives but building out criminal cases.

## LEARNING OBJECTIVES

**Understanding Physical Surveillance:** Participants will learn the fundamentals of physical surveillance, implementing modern surveillance tech, and how to study data before launching out. This course will also cover GPS trackers, footer operations, and how to implement situational awareness application (ITAK/ATAK) into modern day surveillance missions.

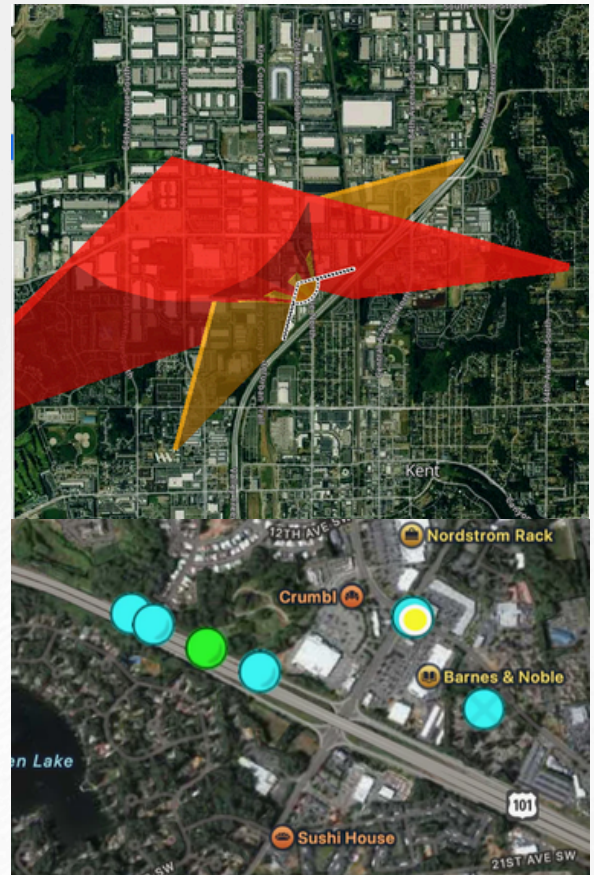
**How to build cases:** Students will learn how to go into a surveillance operation with an investigation's mindset first. Combining surveillance with cell record analysis will help investigators identify co-conspirators, find the getaway car in violent crimes, and find other evidence needed for successful court prosecution.

**Introduction to Cell Record Analysis:** We will provide a brief overview of cell phone technology, including how call detail records (CDRs) work, and their relevance in putting teams in the right place to latch onto their targets with 3,000+ meter pings. Students will make their own "playbooks" from CDRs utilizing CASTVIZ (Free from FBI).

**Data Correlation Techniques:** Participants will explore methods for integrating physical observations on the street with historic cell data by creating actionable intel and operation packets before launching out.

**Real-World Application:** In violent crime operations, often times you don't have a CI to put your team in the right place. This course will show how active teams are latching onto murder and shooting suspects and utilizing physical surveillance to build evidence for court.

FREE - 22 STUDENTS MAX



## TARGET AUDIENCE

This course is designed for law enforcement Officers, Detectives, Task Forces, Street Crime Teams and SWAT who are looking to enhance their investigative and apprehension capabilities through innovative techniques of combining physical surveillance with cell record analysis.

## COURSE

- 40-hour four-day course
- 25% Classroom | 75% Out in Field
- Over ten real life scenarios that incorporate case building investigative techniques for violent crimes with physical surveillance and cell record analysis

[REGISTER ON NW HIDTA'S WEBSITE- CLICK HERE](#)